
THE TOP ACADEMIC OHIO HIGH SCHOOLS - 2011

NOVEMBER 15, 2011

PREPARED BY SCOTT GERBER

GERBER ANALYTICS, LLC

This document identifies the best schools in Ohio, based on each school's performance on the Ohio Graduation Test (OGT). This is the only report that examines Ohio's public, private, and charter schools together. It analyzes the March 2011 OGT, and it is an update to the editions that were created for the March 2007, March 2008, March 2009, and March 2010 tests.

What Was Included?

For those unfamiliar with the OGT tests, there are five parts -- Reading, Mathematics, Writing, Science, and Social Studies. There is also a summary page that shows the percentage of students who successfully passed all five parts with a "Proficient" rating. The data used in this report is from those five parts and the summary.

There were 1,017 schools included in this analysis. The Ohio Department of Education (ODE) Local Report Card data download capability was used to acquire most of the data for the public schools. The ODE provided electronic media as the source for the private school data, the charter schools, and the "percentage of students who passed all five parts" of the test for all schools.

Methodology Used

To obtain the initial group of schools to evaluate, the top schools were identified by using the percentage of students who scored "Proficient" on all five tests. This approach emphasizes the importance of getting all students to successfully pass the test. Those schools which had 91% of their 10th grade students pass all five portions of the test moved to the next round of the analysis. This year, 8.2% made the cut. Eight schools passed all five portions of the test, which is better than last year. Please refer to the table below for year-to-year comparisons.

YEAR	# ACHIEVING 91% THRESHOLD	% ACHIEVING 91% THRESHOLD	# OF SCHOOLS WITH 100% PASS RATE
2007	59	6.0%	7
2008	65	6.6%	12
2009	114	11.3%	13
2010	63	6.2%	5
2011	84	8.2%	8

After identifying the schools that met the 91% threshold, the next step was to calculate the "Performance Index Score (Adjusted)" (PIS) for each school. This field mimics the calculation that the Ohio Department of Education uses for its Performance Index Score, and it more accurately reflects the overall performance of a school. The difference between the ODE value and this document's is that this document calculates the number only for the 10th graders who take the tests. It also calculates the field for private schools, which the ODE does not provide. Creating this field permits an apples-to-apples comparison for all schools. Click [here](#) to go to the Appendix to view the calculation.

Identifying the Top Academic Schools

The criteria for selecting the championship schools should be relatively clear upon examination of the spreadsheet below. The shaded boxes indicate those schools which achieved the highest levels of performance in each subject area. The top ten schools in each category are **shaded**. The state academic champions not only had more "shaded boxes" but they also had high performance in at least three subject areas. Those schools which had the highest percentage of students in the "Advanced" column are double underlined.

Please refer to the figure below for an example. Note that 97% of this school's students received "Accelerated and Above" in Science and 81% of its students received "Advanced." Both numbers were in the "top ten" on the list so they are shaded. The 81% represents the highest "Advanced" percentage that any school received on the list, so it is double underlined.

SCIENCE	
ACCEL & ABOVE	ADV
97%	<u>81%</u>

Figure 1 Spreadsheet Example

Special congratulations go to the "double underlined" schools. They are St. Charles for excelling in Science and Social Studies, St. Joseph Central for Mathematics, and Columbus School for Girls for the highest "Advanced" score in Writing.

Note that the spreadsheet is long -- it contains detailed data for all of the 84 schools that reached the 91% threshold. These schools are sorted according to their PIS (Adjusted) scores.

Please note that there are numerous hyperlinks in this spreadsheet which offer a substantial amount of additional information. To view the web site of each school, click on the school name. (Please be aware that there are numerous examples of great web sites.) Also note the "DETAIL" identifier. This shows how a school performed in relation to the other schools in its Ohio High School Athletic Association (OHSAA) league. Please note that some schools are not in any league, so many were included with other non-league schools. Also note that there are three-year trend charts for each school, and trend charts are far more insightful when evaluating a school.

TOP PERFORMING SCHOOLS IN EACH OF THE FIVE SUBJECTS ARE SHADED

Reading this chart.

The shaded boxes indicate those schools which achieved the highest levels of performance in each subject area. The top ten schools in each category are shaded. The top schools not only had more "shaded boxes" but they also had high performance in at least three subject areas. Those schools which had the highest percentage of students in the "Advanced" column are double underlined. This list is sorted by the Performance Index Score (Adj).

HIGH SCHOOL (Click for Website)	SCHOOL DISTRICT	COUNTY	CLICK FOR DETAILED LEAGUE PERFORMANCE	# STU. IN 10TH GRADE	PIS ADJUSTED	% STU. PASSED 5 OF 5	READING		MATHEMATICS		WRITING		SCIENCE		SOCIAL STUDIES		# OF TOP PERFORMING CATAGORIES
							ACCEL & ABOVE	ADV	ACCEL & ABOVE	ADV	ACCEL & ABOVE	ADV	ACCEL & ABOVE	ADV	ACCEL & ABOVE	ADV	
ST CHARLES PREPARATORY	COLUMBUS DIOCESE	FRANKLIN	DETAIL	159	116.8	100%	97%	72%	100%	96%	98%	10%	96%	79%	99%	92%	9
ST JOSEPH CENTRAL	STEUBENVILLE DIOCESE	LAWRENCE	DETAIL	16	116.3	100%	94%	56%	100%	100%	100%	0%	100%	75%	100%	88%	7
HATHAWAY BROWN	HATHAWAY BROWN HIGH	CUYAHOGA	DETAIL	79	116.1	100%	99%	79%	98%	89%	100%	9%	91%	61%	98%	85%	9
SEVEN HILLS	SEVEN HILLS SCHOOL HIGH	HAMILTON	DETAIL	77	116.1	100%	99%	74%	96%	84%	97%	17%	97%	69%	95%	78%	9
URSULINE ACADEMY	CINCINNATI ARCHDIOCESE	HAMILTON	DETAIL	189	115.9	99%	99%	81%	97%	86%	99%	22%	90%	66%	93%	68%	8
COLUMBUS SCHOOL FOR GIRLS	COLUMBUS SCHOOL FOR GIRLS HIGH	FRANKLIN	DETAIL	58	115.4	98%	84%	50%	97%	86%	93%	22%	95%	62%	98%	88%	8
COLUMBUS ACADEMY	COLUMBUS ACADEMY HIGH	FRANKLIN	DETAIL	76	114.9	100%	97%	67%	96%	67%	90%	6%	95%	64%	94%	69%	5
WALNUT HILLS	CINCINNATI CITY	HAMILTON	DETAIL	370	114.7	99%	95%	61%	98%	87%	92%	10%	84%	54%	95%	81%	5
SOLON	SOLON CITY	CUYAHOGA	DETAIL	472	114.6	97%	92%	68%	95%	82%	88%	12%	84%	62%	93%	83%	5
ST XAVIER	CINCINNATI ARCHDIOCESE	HAMILTON	DETAIL	382	114.5	98%	97%	63%	97%	78%	83%	3%	87%	56%	92%	76%	2
HAWKEN	HAWKEN SCHOOL HIGH	GEAUGA	DETAIL	98	114.5	100%	93%	57%	96%	74%	85%	5%	89%	60%	93%	70%	2
DUBLIN JEROME	DUBLIN CITY	FRANKLIN	DETAIL	317	114.4	96%	93%	61%	94%	80%	87%	9%	89%	63%	93%	81%	4

HIGH SCHOOL (Click for Website)	SCHOOL DISTRICT	COUNTY	CLICK FOR DETAILED LEAGUE PERFORMANCE	# STU. IN 10TH GRADE	PIS ADJUSTED	% STU. PASSED 5 OF 5	READING		MATHEMATICS		WRITING		SCIENCE		SOCIAL STUDIES		# OF TOP PERFORMING CATAGORIES
							ACCEL & ABOVE	ADV	ACCEL & ABOVE	ADV	ACCEL & ABOVE	ADV	ACCEL & ABOVE	ADV	ACCEL & ABOVE	ADV	
MAUMEE VALLEY COUNTRY DAY	MAUMEE VALLEY COUNTRY DAY	LUCAS	DETAIL	37	114.3	97%	95%	63%	100%	85%	93%	5%	93%	70%	85%	59%	6
OAKWOOD	OAKWOOD CITY	MONTGOMERY	DETAIL	163	114.2	97%	88%	56%	95%	80%	92%	6%	85%	58%	89%	73%	
LAUREL	LAUREL HIGH	CUYAHOGA	DETAIL	60	113.9	97%	97%	68%	93%	78%	88%	7%	82%	50%	90%	62%	2
CINCINNATI HILLS CHRISTIAN	CINCINNATI HILLS CHRISTIAN ACA	HAMILTON	DETAIL	101	113.7	97%	92%	56%	93%	73%	86%	8%	78%	52%	87%	68%	
CINCINNATI COUNTRY DAY	CINCINNATI COUNTRY DAY HIGH	HAMILTON	DETAIL	51	113.6	100%	92%	55%	94%	70%	93%	6%	81%	58%	79%	53%	1
MINSTER	MINSTER LOCAL	AUGLAIZE	DETAIL	53	113.6	94%	83%	56%	94%	80%	89%	15%	78%	59%	89%	70%	1
TURPIN	FOREST HILLS LOCAL	HAMILTON	DETAIL	275	113.4	96%	85%	51%	92%	74%	89%	13%	80%	53%	91%	78%	1
ST URSULA ACADEMY	CINCINNATI ARCHDIOCESE	HAMILTON	DETAIL	152	113.3	98%	94%	59%	88%	66%	97%	2%	80%	45%	83%	59%	1
HUDSON	HUDSON CITY	SUMMIT	DETAIL	391	113.3	94%	90%	59%	92%	77%	85%	14%	80%	54%	86%	69%	1
UNIVERSITY	UNIVERSITY HIGH	CUYAHOGA	DETAIL	73	113.3	93%	95%	60%	91%	72%	91%	3%	82%	45%	91%	57%	1
OTTAWA HILLS	OTTAWA HILLS LOCAL	LUCAS	DETAIL	78	113.0	95%	94%	38%	96%	78%	87%	7%	72%	40%	90%	71%	
BISHOP WATTERSON	COLUMBUS DIOCESE	FRANKLIN	DETAIL	276	113.0	96%	90%	58%	92%	67%	85%	3%	74%	47%	92%	78%	
SUMMIT COUNTRY DAY	SUMMIT COUNTRY DAY HIGH	HAMILTON	DETAIL	97	112.9	94%	88%	52%	88%	63%	97%	9%	75%	46%	86%	69%	1
TOLEDO EARLY COLLEGE	TOLEDO CITY	LUCAS	DETAIL	64	112.5	98%	82%	49%	93%	77%	82%	11%	67%	39%	81%	60%	
WELLINGTON SCHOOL	WELLINGTON SCHOOL HIGH SCHOOL	FRANKLIN	DETAIL	47	112.4	98%	79%	38%	98%	68%	81%	4%	74%	55%	81%	51%	1

HIGH SCHOOL (Click for Website)	SCHOOL DISTRICT	COUNTY	CLICK FOR DETAILED LEAGUE PERFORMANCE	# STU. IN 10TH GRADE	PIS ADJUSTED	% STU. PASSED 5 OF 5	READING		MATHEMATICS		WRITING		SCIENCE		SOCIAL STUDIES		# OF TOP PERFORMING CATEGORIES
							ACCEL & ABOVE	ADV	ACCEL & ABOVE	ADV	ACCEL & ABOVE	ADV	ACCEL & ABOVE	ADV	ACCEL & ABOVE	ADV	
OUR LADY OF THE ELMS	CLEVELAND CATHOLIC DIOCESE	SUMMIT	DETAIL	34	112.4	97%	94%	47%	79%	53%	88%	9%	74%	41%	88%	71%	
ST IGNATIUS	CLEVELAND CATHOLIC DIOCESE	CUYAHOGA	DETAIL	382	112.4	95%	91%	51%	90%	69%	90%	2%	71%	38%	85%	60%	
ROCKY RIVER	ROCKY RIVER CITY	CUYAHOGA	DETAIL	191	112.4	91%	87%	48%	90%	72%	91%	17%	78%	47%	74%	55%	1
WESTERN RESERVE ACADEMY	WESTERN RESERVE ACADEMY HIGH	SUMMIT		107	112.2	97%	78%	28%	96%	82%	92%	6%	81%	47%	73%	39%	1
JOHN HAY CAMPUS	CLEVELAND MUNICIPAL SD	CUYAHOGA	DETAIL	75	112.2	96%	80%	32%	100%	72%	85%	1%	66%	30%	88%	72%	1
MASON	MASON CITY	WARREN	DETAIL	829	112.2	94%	86%	48%	90%	71%	80%	7%	79%	50%	87%	71%	
AURORA	AURORA CITY	PORTAGE	DETAIL	239	112.2	95%	85%	47%	93%	75%	78%	3%	82%	58%	85%	66%	
MADEIRA	MADEIRA CITY	HAMILTON	DETAIL	125	112.1	92%	83%	58%	90%	70%	81%	7%	78%	52%	82%	72%	
ST VINCENT-ST MARY	CLEVELAND CATHOLIC DIOCESE	SUMMIT	DETAIL	164	112.1	95%	82%	39%	87%	55%	85%	6%	74%	40%	90%	70%	
CATHOLIC CENTRAL	CINCINNATI ARCHDIOCESE	CLARK	DETAIL	63	112.1	95%	89%	35%	86%	62%	87%	0%	83%	48%	81%	67%	
OLENTANGY LIBERTY	OLENTANGY LOCAL	DELAWARE	DETAIL	380	112.0	94%	86%	51%	89%	67%	83%	11%	71%	45%	83%	63%	
INDIAN HILL	INDIAN HILL EXEMPTED VILLAGE	HAMILTON	DETAIL	180	111.9	92%	85%	56%	89%	67%	83%	15%	75%	47%	85%	72%	1
REYNOLDSBURG ESTEM	REYNOLDSBURG CITY	FRANKLIN	DETAIL	114	111.9	92%	83%	43%	92%	70%	79%	4%	76%	45%	87%	69%	
LIMA CENTRAL CATHOLIC	TOLEDO DIOCESE	ALLEN	DETAIL	77	111.9	95%	82%	36%	88%	57%	77%	5%	77%	47%	87%	61%	
NEW ALBANY	NEW ALBANY-PLAIN LOCAL	FRANKLIN	DETAIL	288	111.8	92%	86%	45%	91%	70%	89%	16%	74%	46%	83%	61%	1

HIGH SCHOOL (Click for Website)	SCHOOL DISTRICT	COUNTY	CLICK FOR DETAILED LEAGUE PERFORMANCE	# STU. IN 10TH GRADE	PIS ADJUSTED	% STU. PASSED 5 OF 5	READING		MATHEMATICS		WRITING		SCIENCE		SOCIAL STUDIES		# OF TOP PERFORMING CATAGORIES
							ACCEL & ABOVE	ADV	ACCEL & ABOVE	ADV	ACCEL & ABOVE	ADV	ACCEL & ABOVE	ADV	ACCEL & ABOVE	ADV	
UPPER ARLINGTON	UPPER ARLINGTON CITY	FRANKLIN	DETAIL	453	111.8	91%	87%	54%	92%	75%	80%	9%	68%	40%	85%	74%	
MOUNT NOTRE DAME	CINCINNATI ARCHDIOCESE	HAMILTON	DETAIL	180	111.7	94%	87%	48%	89%	57%	87%	4%	67%	36%	78%	56%	
MARIEMONT	MARIEMONT CITY	HAMILTON	DETAIL	121	111.7	93%	90%	62%	90%	68%	88%	18%	71%	42%	89%	79%	3
CHAGRIN FALLS	CHAGRIN FALLS EXEMPTED VILLAGE	CUYAHOGA	DETAIL	182	111.7	95%	90%	54%	91%	68%	86%	13%	72%	44%	76%	57%	1
BELLBROOK	SUGARCREEK LOCAL SCHOOL DISTRICT	GREENE	DETAIL	236	111.5	93%	83%	50%	86%	64%	77%	2%	75%	51%	83%	67%	
SPRINGBORO	SPRINGBORO COMMUNITY CITY	WARREN	DETAIL	365	111.4	93%	81%	41%	87%	65%	77%	5%	77%	51%	86%	71%	
ARCHBISHOP ALTER	CINCINNATI ARCHDIOCESE	MONTGOMERY	DETAIL	166	111.3	93%	90%	44%	83%	59%	77%	3%	79%	41%	84%	66%	
BEXLEY	BEXLEY CITY	FRANKLIN	DETAIL	181	111.2	92%	86%	46%	90%	62%	87%	5%	75%	46%	86%	72%	
LUCAS	LUCAS LOCAL	RICHLAND	DETAIL	34	111.0	94%	88%	44%	78%	47%	97%	6%	63%	22%	75%	41%	1
MAGNIFICAT	CLEVELAND CATHOLIC DIOCESE	CUYAHOGA	DETAIL	190	111.0	92%	88%	49%	81%	51%	89%	7%	69%	32%	76%	54%	
WAYNESVILLE	WAYNE LOCAL	WARREN	DETAIL	128	110.8	91%	74%	41%	89%	66%	78%	3%	71%	47%	85%	72%	
MIAMI VALLEY	MIAMI VALLEY HIGH	MONTGOMERY	DETAIL	40	110.8	93%	90%	48%	90%	70%	78%	3%	65%	33%	75%	48%	
ARCHBISHOP MOELLER	CINCINNATI ARCHDIOCESE	HAMILTON	DETAIL	229	110.7	92%	82%	46%	78%	51%	83%	1%	72%	38%	83%	57%	
VERSAILLES	VERSAILLES EXEMPTED VILLAGE	DARKE	DETAIL	110	110.6	91%	74%	32%	88%	78%	66%	5%	78%	36%	81%	62%	
NOTRE DAME-CATHEDRAL LATIN	CLEVELAND CATHOLIC DIOCESE	GEAUGA	DETAIL	203	110.6	93%	87%	45%	78%	52%	85%	4%	71%	40%	70%	42%	

HIGH SCHOOL (Click for Website)	SCHOOL DISTRICT	COUNTY	CLICK FOR DETAILED LEAGUE PERFORMANCE	# STU. IN 10TH GRADE	PIS ADJUSTED	% STU. PASSED 5 OF 5	READING		MATHEMATICS		WRITING		SCIENCE		SOCIAL STUDIES		# OF TOP PERFORMING CATAGORIES
							ACCEL & ABOVE	ADV	ACCEL & ABOVE	ADV	ACCEL & ABOVE	ADV	ACCEL & ABOVE	ADV	ACCEL & ABOVE	ADV	
GRANDVIEW HEIGHTS	GRANDVIEW HEIGHTS CITY	FRANKLIN	DETAIL	80	110.6	93%	80%	45%	90%	68%	81%	11%	80%	58%	77%	67%	
ST JOHN'S JESUIT	TOLEDO DIOCESE	LUCAS	DETAIL	203	110.6	92%	79%	30%	91%	58%	76%	1%	64%	31%	81%	56%	
MIAMI VALLEY CHRISTIAN ACADEMY	MIAMI VALLEY CHRISTIAN ACADEMY	HAMILTON	DETAIL	13	110.5	92%	85%	38%	69%	54%	92%	0%	62%	38%	69%	46%	
MONTESSORI HS AT UNIVERSITY		CUYAHOGA		23	110.4	91%	87%	43%	78%	61%	78%	13%	74%	35%	78%	43%	
AKRON EARLY COLLEGE	AKRON CITY	SUMMIT		88	110.3	95%	67%	17%	87%	54%	74%	1%	67%	28%	90%	72%	
LEARNING UNLIMITED-VILLAGE	LEARNING UNLIMITED-VILLAGE	DELAWARE	DETAIL	25	110.2	96%	92%	40%	80%	40%	76%	4%	72%	28%	76%	48%	
BISHOP FENWICK	CINCINNATI ARCHDIOCESE	WARREN	DETAIL	125	110.1	91%	86%	39%	82%	49%	82%	2%	69%	34%	69%	46%	
PADUA FRANCISCAN	CLEVELAND CATHOLIC DIOCESE	CUYAHOGA	DETAIL	204	110.1	91%	84%	40%	72%	46%	80%	5%	60%	22%	82%	54%	
XENIA CHRISTIAN	XENIA CHRISTIAN	GREENE	DETAIL	33	110.1	91%	79%	45%	91%	55%	85%	0%	73%	33%	67%	36%	
WALSH JESUIT	CLEVELAND CATHOLIC DIOCESE	SUMMIT	DETAIL	243	109.9	93%	81%	36%	74%	40%	82%	4%	66%	30%	76%	49%	
KINGSWAY CHRISTIAN	KINGSWAY CHRISTIAN	WAYNE		11	109.8	100%	73%	18%	73%	36%	82%	9%	55%	9%	82%	55%	
JOHN HAY SCIENCE & MEDICINE	CLEVELAND MUNICIPAL SD	CUYAHOGA		85	109.6	96%	79%	30%	84%	56%	71%	1%	74%	41%	81%	63%	
OLD FORT	OLD FORT LOCAL	SANDUSKY	DETAIL	34	109.4	94%	79%	36%	73%	52%	76%	0%	61%	42%	73%	64%	
ELYRIA CATHOLIC	CLEVELAND CATHOLIC DIOCESE	LORAIN	DETAIL	104	109.4	91%	81%	35%	83%	49%	71%	1%	59%	26%	76%	49%	
TOLEDO TECHNOLOGY ACADEMY	TOLEDO CITY	LUCAS	DETAIL	45	109.3	91%	79%	24%	88%	62%	55%	2%	64%	33%	69%	45%	

HIGH SCHOOL (Click for Website)	SCHOOL DISTRICT	COUNTY	CLICK FOR DETAILED LEAGUE PERFORMANCE	# STU. IN 10TH GRADE	PIS ADJUSTED	% STU. PASSED 5 OF 5	READING		MATHEMATICS		WRITING		SCIENCE		SOCIAL STUDIES		# OF TOP PERFORMING CATEGORIES
							ACCEL & ABOVE	ADV	ACCEL & ABOVE	ADV	ACCEL & ABOVE	ADV	ACCEL & ABOVE	ADV	ACCEL & ABOVE	ADV	
MADISON CHRISTIAN	FRANKLIN	FRANKLIN	DETAIL	49	109.3	92%	78%	31%	84%	51%	65%	0%	63%	35%	63%	37%	
LOVELAND	LOVELAND CITY	HAMILTON	DETAIL	338	109.2	91%	79%	40%	83%	56%	64%	3%	69%	45%	77%	56%	
ANTHONY WAYNE	ANTHONY WAYNE LOCAL	LUCAS	DETAIL	305	109.2	91%	76%	35%	79%	55%	76%	2%	70%	37%	75%	57%	
HILAND	EAST HOLMES LOCAL	HOLMES	DETAIL	74	108.9	93%	80%	43%	88%	73%	84%	5%	65%	34%	81%	64%	
LAKE CENTER CHRISTIAN	LAKE CENTER CHRISTIAN	STARK	DETAIL	46	108.8	91%	80%	37%	83%	50%	78%	0%	67%	35%	78%	52%	
NEWBURY	NEWBURY LOCAL	LAKE	DETAIL	60	108.8	95%	66%	29%	84%	40%	56%	3%	68%	29%	69%	40%	
FAIRFIELD CHRISTIAN ACADEMY	FAIRFIELD CHRISTIAN ACADEMY EL	FAIRFIELD	DETAIL	44	108.7	93%	80%	40%	89%	53%	71%	0%	62%	29%	48%	34%	
CANTON CENTRAL CATHOLIC	YOUNGSTOWN DIOCESE	STARK	DETAIL	89	108.3	92%	69%	28%	84%	51%	62%	3%	69%	42%	47%	26%	
MASSILLON CHRISTIAN	MASSILLON CHRISTIAN	STARK		11	108.2	91%	73%	18%	91%	64%	73%	0%	73%	36%	55%	27%	
BOTKINS	BOTKINS LOCAL	SHELBY	DETAIL	56	108.1	91%	60%	22%	82%	56%	80%	0%	56%	26%	82%	62%	
OTTOVILLE	OTTOVILLE LOCAL	PUTNAM	DETAIL	49	108.0	92%	68%	26%	82%	50%	70%	0%	68%	38%	70%	50%	
CORNERSTONE CHRISTIAN ACADEMY	CORNERSTONE CHRISTIAN ACADEMY	LAKE	DETAIL	23	107.9	91%	92%	58%	77%	46%	74%	0%	62%	31%	62%	42%	

Gerber Analytics' List of State Academic Champions

This year, nine schools were named as academic champions, based on a natural break of how the schools appeared in the spreadsheet. The state academic champions for this year are listed below in Performance Index Score order:

HIGH SCHOOL	CITY	COUNTY	YEARS AS CHAMPION
St. Charles Preparatory	Columbus	Franklin	2007, 2008, 2009, 2010, 2011
St. Joseph Central	Ironton	Lawrence	2011
Hathaway Brown	Shaker Heights	Cuyahoga	2007, 2008, 2009, 2010, 2011
Seven Hills	Cincinnati	Hamilton	2008, 2009, 2010, 2011
Ursuline Academy	Cincinnati	Hamilton	2007, 2008, 2009, 2010, 2011
Columbus School for Girls	Columbus	Franklin	2007, 2008, 2010, 2011
Columbus Academy	Columbus	Franklin	2011
Walnut Hills	Cincinnati	Hamilton	2011
Solon	Solon	Cuyahoga	2011

Congratulations to these exceptional schools.

Google Graphic

A map with the locations of the 84 schools on the list is included below. The red markers indicate the top nine schools. The map hyperlink below goes to an interactive map. The Google Satellite button may be used to view schools in more detail from a "sky view" perspective. The Google Street View feature is available for many schools (by clicking on the "yellow figure"), and it provides yet another perspective.



Figure 2 Map of Top Ohio Academic Schools - Click on Picture



Figure 3 Street View of Walnut Hills - Click on Picture

This Year's Editorial

As you know from the previous reports, I am not in the education business. I perform these analyses because I am passionate about education, and because I have the time and skills to create them. My goal with this project is to identify the top academic schools and the league academic champions. Hopefully this recognition will provide additional motivation to all communities to focus more time and energy on education.

Identifying the Top Academic Performers in Each Sports League

The information that the Ohio Department of Education provides is great, but it does not compare schools in a manner that is as relevant as it could. All communities have a familiarity with the Ohio High School Athletic Association (OHSAA) sport leagues. They see school sports results almost daily in their local papers, and this information is tracked almost religiously by a large segment of each community.

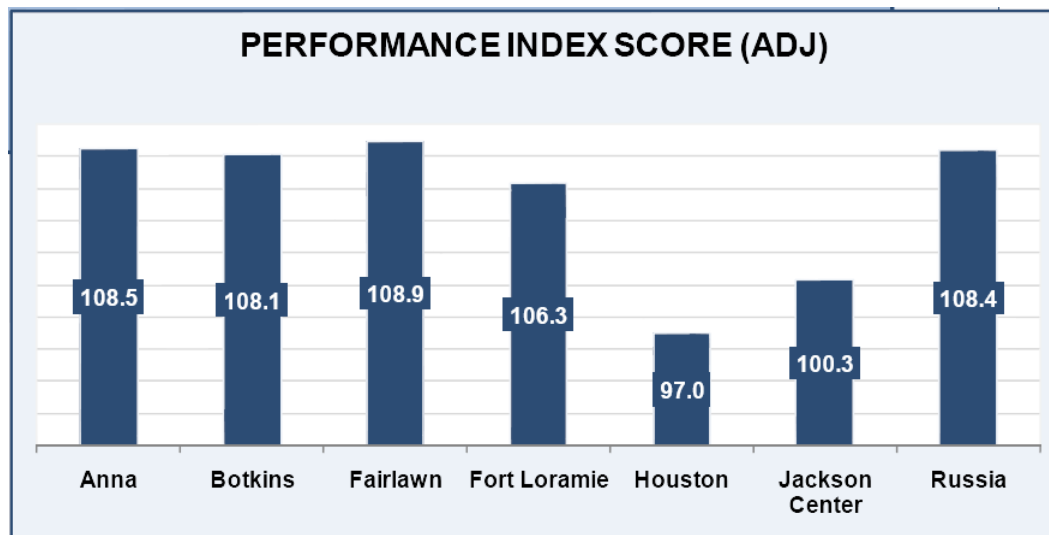


Figure 4 Performance Index Scores of the Shelby County Athletic League Schools

Using the "sports perspective" for academics would present this material in a manner that is very familiar to most people. This approach would not only be far more informative because it compares people and communities that are similar, but it would also provide additional motivation for schools to improve.

It is time for a quiz. Please disconnect your Internet connection. Which school in your league performed the best in Social Studies? Where did your school finish? Did it finish in the top half or the bottom half? Where did your school finish in football?

Would your superintendent know the answers to these questions? How would your school board do? Would they only get the last question correct?

In some cases (i.e. Columbus Academy and Whitehall-Yearling), there are substantial socio-economic differences among league participants, and their academic results will be substantially different. It is important to be aware of these differences, but it is not a reason to be unaware of the results. It may also be very difficult for Whitehall to become a division champion, but they can beat other schools in their league.

It is great to recognize athletic endeavors, and it is completely acceptable to recognize academics as well. Ohio needs to do a better job of recognizing its academic leaders.

Strong Performers in 2011

While this document's main purpose is to identify Ohio's top performing academic schools, it is also worthwhile to identify the schools that showed significant improvement. Each of these schools had considerable success in three criteria. They are: Performance Index Score, Percentage of Students Who Passed All Five Tests, and School League Academic Ranking. Hopefully the communities of these schools are aware of these schools' accomplishments and these schools continue to improve their performance.

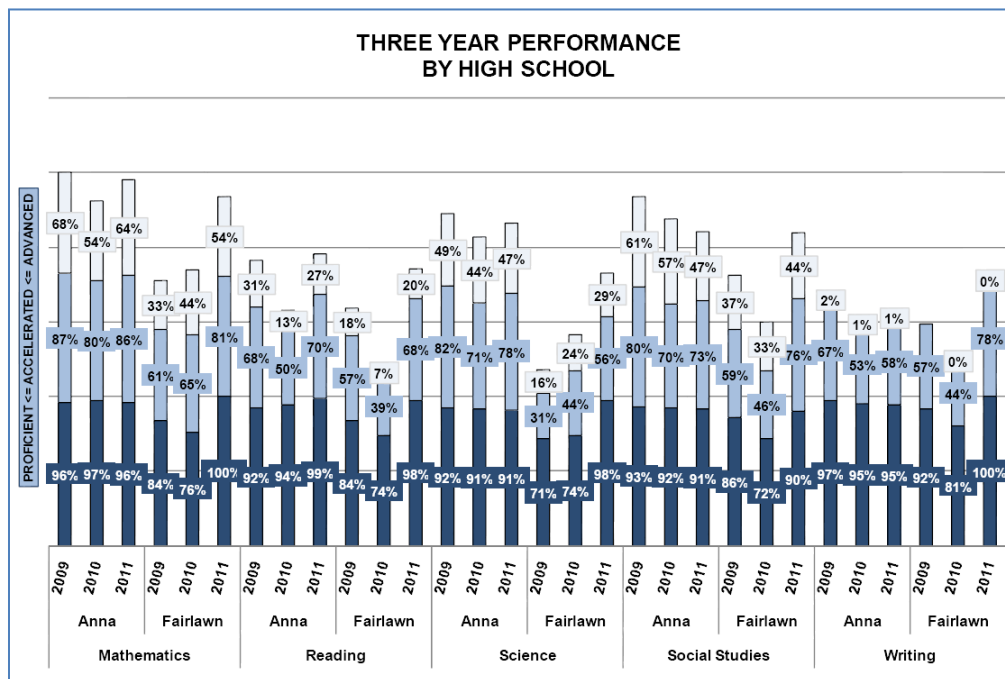
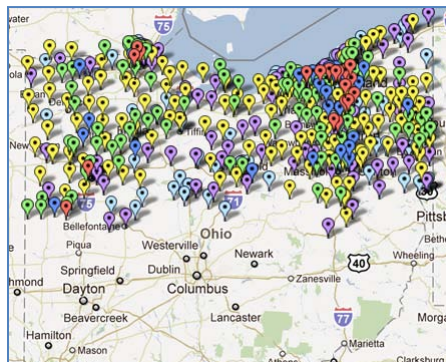


Figure 5 Performance of Anna versus Fairlawn

SCHOOLS	LEAGUE	PIS 2010-2011 IMPROVEMENT	% PASSING ALL FIVE TESTS IMPROVEMENT	LEAGUE PERFORMANCE	LINK TO GERBER ANALYTICS INFO.
Ada	Northwest Conference	96.4 to 107.5	59% to 87%	9th to 4th	Gerber Analytics
Danbury	Toledo Area Athletic Conference	94.9 to 106.9	49% to 85%	Last place (8th) to 5th	Gerber Analytics
Fairlawn	Shelby County Athletic League	94.7 to 108.9	63% to 80%	Last place (7th) to 1st	Gerber Analytics
Green	South Ohio Conference	93.5 to 105.8	57% to 85%	5th to 2nd	Gerber Analytics
Whiteoak	Southern Hills Athletic Conference	91.9 to 104.0	52% to 75%	9th to 4th	Gerber Analytics

More Education Analysis Tools on Gerber Analytics

Gerber Analytics offers additional information not available elsewhere. The locations of the 976 Ohio high schools that had Performance Index Scores for their tenth graders are shown on the state map. To reduce the processing (or load) times, the map is broken into three parts: Northern, Central, and Southern Ohio. The schools are color-coded by performance, based on their March 2011 Performance Index Scores. These categories are: Top 5%, Top 10%, Top 25%, Top Half, Top 2/3's, and Lower 1/3.



Using This List

The schools on My Top Academic Ohio High School list are all exceptional schools, however, there are other excellent schools which are not on the list because they did not reach the 91% "Passed Five of Five" threshold. If a school wants to proclaim that it is 25th on the list, that is appropriate. To proclaim that a school is 25th in academics in Ohio, is inappropriate. Again, the 91% threshold is extremely important because it tells readers that essentially *all* of the students are extremely serious about academics and that all of the kids in each and every classroom really care.

There are also a few schools that were on the list last year (i.e. Columbus Torah Academy) but not this year because they did not have performance data. The ODE requires that at least ten students take the tests before they release the data and some schools did not have enough students take the test.

To Repeat a Portion of Last Year's Report. . .

Does this document include any mistakes? Hopefully not, data was carefully entered and the numbers were double checked, but it is possible. Please send a Feedback message with any significant discrepancies. The revised document will be updated and placed online.

Will this type of ranking put more pressure on schools to do well? It might if the State of Ohio would endorse and publish the results of this type of friendly competition. It would encourage all schools and their students to do better as they strive to be one of the best schools. However, this is not about applying pressure to *just* the high schools. Excellent performance on this 10th grade test is not possible without the following:

- Hard-working students who are willing to spend multiple hours on homework every night and who are challenging and competing against their fellow classmates. (And remember, unlike sporting events, every student in the 10th grade participates and every student matters.)
- Caring parents who are giving their children an opportunity to work on their assignments and making the sacrifices to help their children by transporting them to better schools outside of their neighborhood; by paying tuition or higher property taxes (or both) to allow their children to go to a better school; and/or by moving to a community that places a greater emphasis on education
- Outstanding teachers who teach well and who can motivate their students
- Administrations who set high expectations for the students, teachers, and parents

- Outstanding elementary and middle school teachers who have established a solid foundation for the students
- Active volunteers who help with those activities that the teacher / administrative staff do not have the expertise and/or time to perform
- Supporting communities that place a high value on education and by ensuring that there is a tradition of academic excellence

Will this type of ranking force schools to spend more time emphasizing the process of test taking? Some schools spend an inordinate amount of time teaching their students to take the OGT. The above schools also prepare for the OGT, but they likely cover the fundamentals so thoroughly that the OGT is a minor distraction for them – not a major emphasis. There are also some schools that appear to have substantially better approaches than others to teach some subjects. Perhaps they would be willing to share some of their best practices with other schools?

While it would certainly be great to profit from this effort, please record the last five years of this education analysis as a pro-bono or volunteer effort. I do this type of analysis because I enjoy doing it. I am also hopeful that it will benefit an extremely large number of Ohioans. If this analysis receives a large distribution, that might happen. I certainly appreciate the *Cincinnati Enquirer's* coverage of this analysis for the last two years.

You may forward this report to anyone you wish but please give proper attribution if you use any of this material. To assist with tracking, please provide others with this [link](http://www.GerberAnalytics.com/ogt/ogt_topschools.php) (www.GerberAnalytics.com/ogt/ogt_topschools.php) rather than to send them this pdf.

I have a substantial "one-of-a-kind" database, and I am open to new analysis projects. If you have an education-related analysis project in mind that you think would benefit all Ohio schools, please contact me.

Please let me know if you have any questions or comments.

Scott Gerber
Gerber Analytics, LLC
GerberAnalytics.com

Email: [ScottGerber "at" cs.com](mailto:ScottGerber@cs.com)

PERFORMANCE INDEX SCORE (ADJUSTED)

Note that the Performance Index Score (Adjusted) is different from what you may have seen on the Ohio Department of Education's Report Card. The calculation in this document is **only** for the **10th grade students**. It also does not include any students who did not take the test. It was calculated as follows:

Ada High School

Subject	Below Basic	Basic	Proficient	Accelerated	Advanced	
Mathematics	9.4%	9.4%	24.5%	20.8%	35.8%	
Reading	3.8%	5.7%	43.4%	35.8%	11.3%	
Science	3.8%	18.9%	26.4%	22.6%	28.3%	
Social Studies	15.1%	9.4%	24.5%	22.6%	28.3%	
Writing	5.7%	5.7%	39.6%	47.2%	1.9%	
Total of Above	37.7%	49.1%	158.5%	149.1%	105.7%	
Average of 5	7.5%	9.8%	31.7%	29.8%	21.1%	
Factor	0.3	0.6	1	1.1	1.2	
						Summation
Average * Factor	2.3	5.9	31.7	32.8	25.4	98

It was necessary to create this 10th grade only version of a Performance Index Score for a better "apples to apples" comparison of all schools (both private and public).

[Return to document.](#)